

## 360° rotating anchor

### Description:

**SECURIFIX® rotatif** is a fall arrester system to secure an area inaccessible to the public where there is a risk of falling.

**SECURIFIX® rotatif** has the special feature of being 360-degree rotatable and is designed for installation on dry metal deck roofs or standing seam roofs.

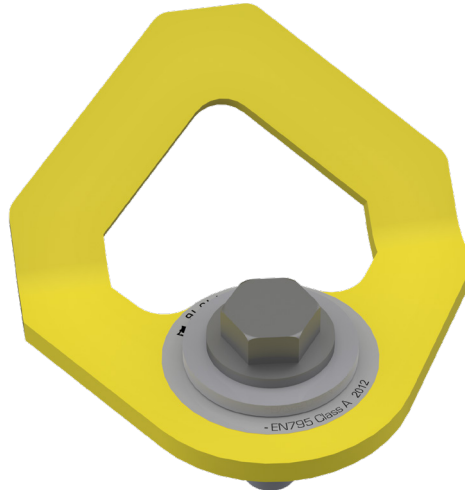
In the event of specific constraints, our design office will be able to offer an appropriate solution.

### Details:

**Material :** 304L stainless steel

**Finish :** Yellow painted

**Setup:** Delivered with manuals and drawings available online at: <http://extranet.somain.fr>



**REF : 102535**

**SECURIFIX® rotatif**

360-degree rotating anchor point  
Stainless steel painted

### ✓ Advantages

The 360° anchor is preferably used on metal roofs.

The possibility of rotating the anchor point makes the system ideal for protection as the fixing plates absorb and optimally distribute the stress generated during a fall. It supports up to 1 user.

### ⋮ Options

Specific RAL colour on request.

### i Additional information



**REF : 100870**

Signage poster: mandatory wearing of PPE, to be installed at each access to the protected zone.

Available, on request, in the language of your choice with the possibility to insert your logo.

