

Lifeline for industrial structures

Description:

SECURIFIL® Industrie is a flexible horizontal belay support especially adapted to industrial structures (steel beams, bridge cranes, corrosive environments, etc.).

When it is not possible to install a collective protection for your work at height, the lifeline is the appropriate solution to work in complete safety.

Details:

Material: 304L or 316L stainless steel

Finish: Raw or powder-coated

Setup: Delivered with manuals and drawings available online at: <http://extranet.somain.fr>



✓ Advantages

SECURIFIL® industrie is guaranteed for 10 years.

SECURIFIL® industrie is used with a simple EN 362 compliant connector, no special trolley or slider are required.

SECURIFIL® industrie can be installed on all types of supports and roofs. In the event of specific constraints, our design office is able to offer you the appropriate solution.

100% made of stainless steel parts, **SECURIFIL® industrie** is corrosion resistant. For this reason, this lifeline is chosen for aggressive environments such as landfills, saline environments, and the food industry (depending on the 304L or 316L version).

The design and materials used in the manufacture of the **SECURIFIL® industrie** increase its resistance to mechanical shocks that may occur in an industrial environment.

The **SECURIFIL® industrie** fixing parts can be bolted or welded directly to metal structures.

• Spacing

SECURIFIL® industrie can be installed with a centre distance of 15m between two intermediates. For distances greater than 15 m, choose the **SECURIFIL® renforcée**.

• Users

SECURIFIL® industrie supports up to 3 users.

In compliance with the standard, a calculation software is available on our extranet (extranet.somain.fr)

⋮ Options

Available in 316L stainless steel.

Specific RAL colour on request.

Our design office is at your disposal to offer you tailor-made solutions for each situation.

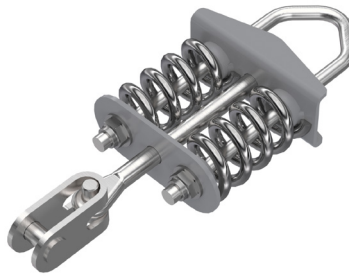
+ Elements

All **SECURIFIL® industrie** lifelines consist of these elements.



REF : 100145

Stainless steel end part 4 holes
Fixing: M12 or by welding on metal structure
Adaptable on metal structure, concrete support, special support of our supply.
Spacing: 100 x 80 mm



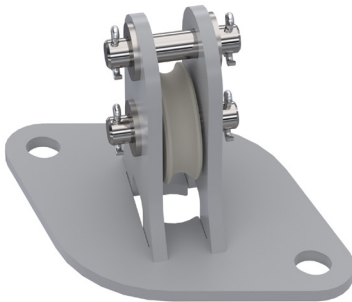
REF : 100476

Stainless steel energy absorber with clevis, installed at one end of the lifeline, reduces stress in case of fall.



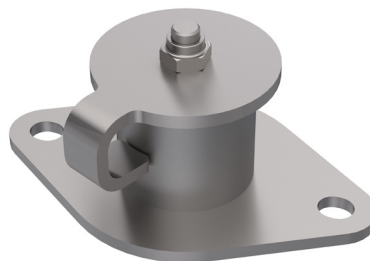
REF : 100148

Stainless steel intermediate, positioned every 15 meters maximum
Fixing: M12 or by welding on metal structure.
Adaptable on metal structure, concrete support, special support of our supply.
Spacing: 72 mm



REF : 102188

Intermediate pulley for vertical angle. 2 holes.
Centre-to-centre distance: 100 mm
Fixing: M10 or M12



REF : 102320

V2 adjustable stainless steel angular part. Every 15 metres maximum.
Centre-to-centre distance: 2 holes 100 mm
Fixing: M10 or M12



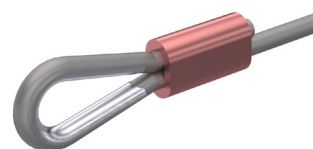
REF : 100149

Stainless steel clevis/clevis tensioner, allows adjusting the tension of the lifeline during installation.



REF : 102132

Aluminium cable clamp kit, diameter 10 mm.
+ 1 stainless steel wire thimble diam. 10



REF : 100452

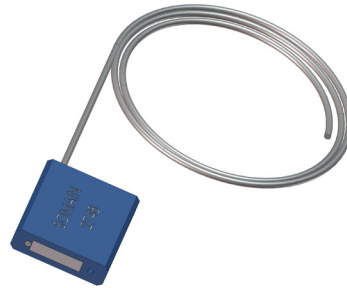
Crimping set for stainless steel cable diameter 10 mm.
Factory-assembled, it joins the cable with the absorber.

+ Elements

All **SECURIFIL® industrie** lifelines consist of these elements.



REF : 100118
Stainless steel cable.
Diameter 10 mm 7 x 19.



REF : 100124
SOMAIN Sealing.
Attaches to tensioner to prevent cable tension from changing.
Traceability by a unique serial number.



REF : 102128
Raw aluminium plate for mandatory poster.



REF : 100886
Signage poster: mandatory wearing of PPE, to be installed at each access to the lifeline.

Available, on request, in the language of your choice with the possibility to insert your logo.