

Aluminium lifeline

Description:

SECURIFIL® alu V3 is installed when it is not possible to set up sufficient collective protection for work carried out high up, the lifeline is the appropriate solution to work in complete safety.

Details:

Material: Stainless steel/aluminium



Finish: Electro-polished stainless steel and powder-coated aluminium

Setup: Delivered with manuals and drawings available online at: <http://extranet.somain.fr>



✓ Advantages

- **Competitiveness**
We were able to lighten the interface supports (posts, plates, fasteners, etc...) because the **SECURIFIL® alu V3** significantly reduces stress in case of a fall.
- **Quality**
The absorber is made of 316 stainless steel. It is guaranteed for 10 years against corrosion (excluding special environments)
- **Traceability**
SECURIFIL® alu V3 has a unique serial number placed on the absorber and sealing.
- **Simplicity**
SECURIFIL® alu V3 can be used without a special trolley or slider (cost optimisation).
- **Adaptability**
SECURIFIL® alu V3 can be installed on all types of supports and roofs.
- **Spacing**
SECURIFIL® alu V3 can be installed with a centre distance of 15m between two intermediates. For distances greater than 15 m, choose the **SECURIFIL® renforcée**.
- **Users**
SECURIFIL® alu V3 supports up to 4 users.

In the event of specific constraints, our design office is able to offer you the appropriate solution.

In accordance with the standard, a software program for calculating forces is available on our extranet (extranet.somain.fr)

⋮ Options

Available with galvanised or stainless steel support.

Specific RAL colour on request (standard: RAL 7038).

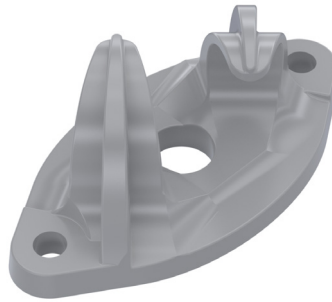
Our design office is at your disposal to offer you tailor-made solutions for each situation.

+ Elements

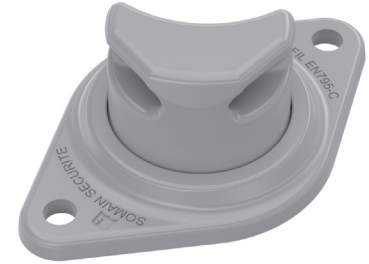
All **SECURIFIL® alu V3** lifelines consist of these elements.



REF : 102441
V2 adjustable aluminium end.
Spacing: 2 holes 141 mm
Fixing: M10 or M12



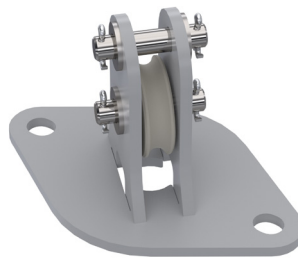
REF : 101759
Alu V2 intermediate part.
Every 15 metres maximum.
Spacing: 2 holes 141 mm.
Fixing: M10 or M12



REF : 102442
V2 adjustable aluminium angular part.
Every 15 metres maximum.
Spacing: 2 holes 141 mm
Fixing: M10 or M12



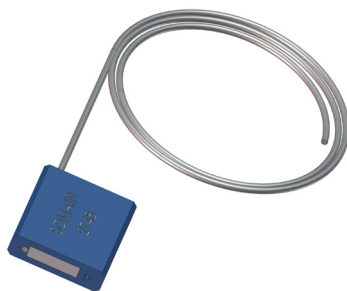
REF : 102173
Aluminium/stainless steel eye shock absorber,
installed at one end of the lifeline, reduces stress on the structure in case of a fall.
Traceability by unique serial number.
Equipped with a tension and fall indicator.



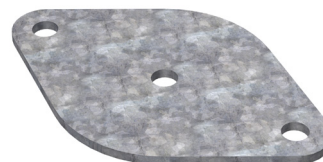
REF : 102188
V2 inox intermediate pulley.
Every 15 metres maximum.
2 holes.
Spacing: 141 mm
Fixing: M10 or M12



REF : 100122
Tensioner stainless eye/clevis, allows adjustment of the tension of the lifeline during installation.



REF : 100124
SOMAIN Sealing.
Attaches to tensioner to prevent cable tension from changing.
Traceability by a unique serial number.



REF : 102364
3-hole plate in galvanized steel for ends / intermediate / angle transmission.
Indispensable on concrete posts, hot decks and on standing seam supports.

REF : 102365
3-hole stainless steel plate for ends / intermediate / bevel gear.
Indispensable on concrete posts, hot decks and on standing seam supports.

+ Elements

All **SECURIFIL® alu V3** lifelines consist of these elements.



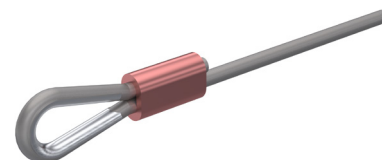
REF : 100150

Stainless steel cable diameter 8 mm 7x19.



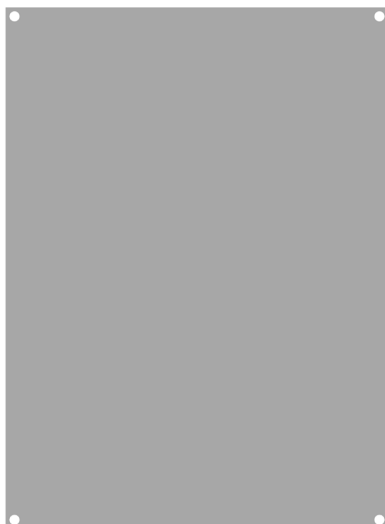
REF : 102131

Aluminium cable clamp kit, diameter 8 mm + 1 stainless steel wire thimble diam. 8 mm.



REF : 100478

Crimping set for stainless steel cable + stainless steel wire thimble 8 mm diameter.



REF : 102128

Raw aluminium plate for mandatory poster.



REF : 100886

Mandatory poster : Wearing of PPE, to be installed at each access to the lifeline.

Available, on request, in the language of your choice with the possibility to insert your logo.