

Crinoline ladder

Description:

The **SECURECHELLE® crinoline** is a vertical technical access means in aluminium. Completely modular thanks to a large choice of components.

It adapts to all configurations. Several access blocking systems are also available.

Details:

Material: Aluminium

Finish: Raw or powder-coated

Setup: Delivered with manuals and drawings available online at: <http://extranet.somain.fr>

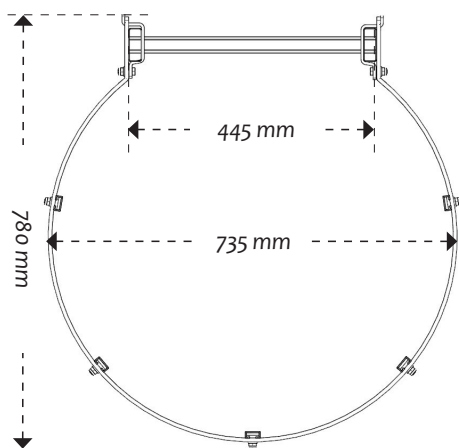


Options

Stainless steel screws on request.

Specific RAL colour on request.

Our design office is at your disposal to offer you tailor-made solutions for each situation.



Ladder exit



Flight change



Ladder access



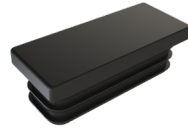
+ Elements: ladder and crinoline



REF : 100225
Aluminium ladder 1960 mm

REF : 100226
Aluminium ladder 2800 mm

REF : 100227
Aluminium ladder 3640 mm



REF : 100228
Plastic cap for ladder



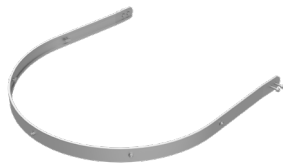
REF : 100231
Fitting for wires



REF : 100229
Plastic ladder fitting.



REF : 100230
Crinoline thread.
Length 3190 mm.



REF : 100234
Large aluminium back protector.
For mounting on front exit.



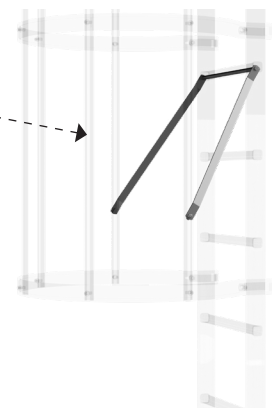
REF : 100237
Roll bar 3/4. for flight change
and side exit.



REF : 100232
Aluminium back protector
(every 1400 mm maximum).



REF : 100233
Diagonal support, to reinforce
the first arch of each flight.



+ Elements: ladder exit



REF : 100244
Standard exit + 210 mm landing
step + gate



REF : 100242
Gate required for compliance.



REF : 100238
Wide aluminium
front exit



REF : 101228
Retractable exit crossbar
Aluminium
For clamping on ladder.



REF : 102432
Gate clasp kit

REF : 100239
Landing 725 mm + lowering 680 mm

REF : 100240
Landing 950 mm + lowering 680 mm

REF : 100241
Landing 1175 mm + lowering 680 mm

➤ Flight change

The NFE 85-016 standard requires a change of flight every 6 metres from a height of 8 metres.

The change of flight is a device designed to divide the height of the ladder into sections of up to 6 metres to create resting landings. It is also possible to create side exits to access different levels.

Lateral exit, example:

REF : 102139

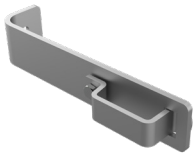
Standard gate for lateral exit.



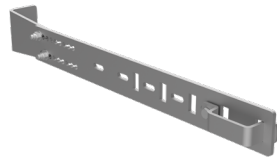
+ Elements: ladder fasteners

On concrete

On cladding



REF : 100245
Fixing leg in aluminium 210 mm.
Fixing: 1 M10



REF : 100246
Adjustable aluminium fixing leg, 210 to 520 mm.
Fixing: 1 M10



REF : 101214
Adjustable aluminium fixing leg, 500 to 800 mm.
Fixing: 1 M12



REF : 100399
Stainless steel plate for fixing on cladding.

REF : 102233
Zinc-plated plate for fixing on cladding.



REF : SPECIAL
Special configuration with 4 metre mast.

On the ground



REF : 100520
Ballast weight fixing kit



REF : 100521
Fixing kit on ground

+ Elements: Connections with the **SECURILISSE®** guardrails



REF : 100527
SECURILISSE® junction ladder/handrail (1 side)



REF : 100528
SECURILISSE® railing ladder/railing midrail (1 side)



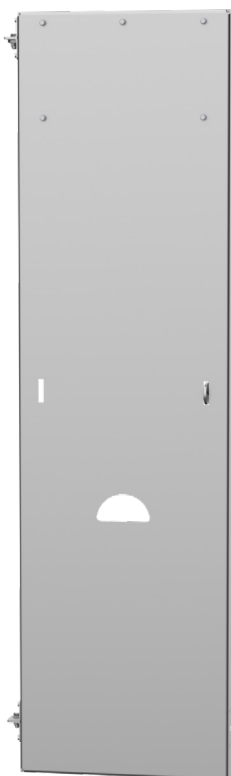
REF : 101339
SECURILISSE® autoportant railing protection kit, length 2 metres (optional plinth)



REF : 101338
Railing protection kit **SECURILISSE® bac acier** length 2 metres (optional plinth).

+ Elements: Locking doors

Compliant with NF E85-012.



REF : 100523

Single aluminium locking door with chain to hold the door open.

Height: 1800 mm

Supplied with hinges and padlocking kit.



REF : 100526

Single aluminium locking door with cover and chain to hold the door open.

Height: 1800 mm

Supplied with hinges and padlocking kit.



REF : 101775

Right-hinged pedal door

REF : 101777

Left-hinged pedal door

Aluminium locking door with cover and pedal for opening from the inside of the crinoline.

Height: 1800 mm

Supplied with hinges and locking kit.



REF : 100525

Aluminium half lock door with cover

Height: 500 mm

Supplied with hinges and padlocking kit.



REF : 101787

Non-compliant cover.

Supplied with hinges and padlocking kit.



REF : 100249

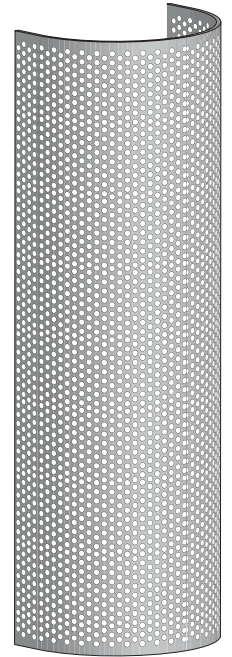
Fireman's padlock + key, for locking door.

+ Elements: anti-intrusion protection



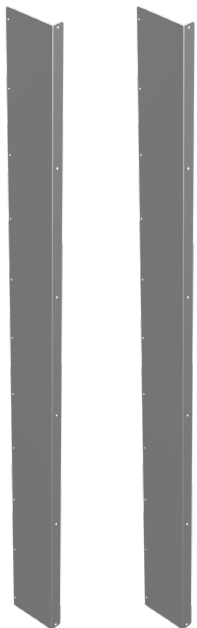
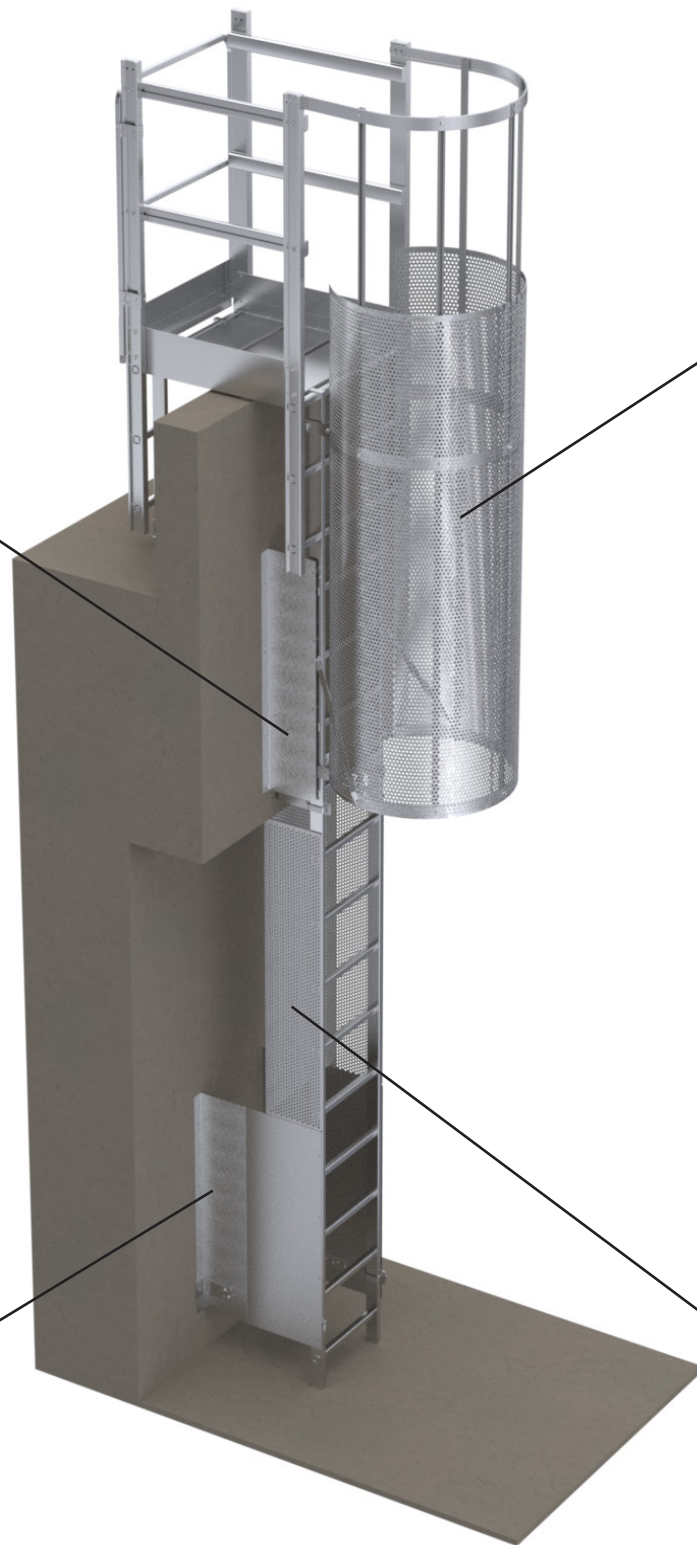
REF : 101417

Pair of side protection sheets between the wall and the ladder.
For brackets, 210 mm



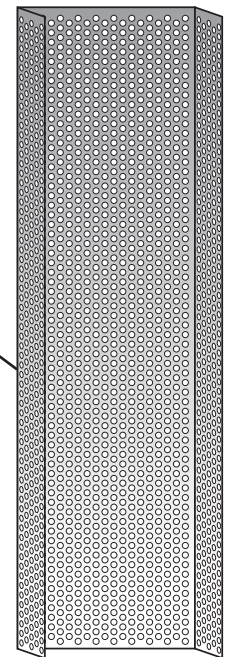
REF : 101414

2000 mm high perforated aluminium intrusion-resistant curved sheet



REF : 101557

Double pair of adjustable side protection sheets between wall and ladder.
For adjustable brackets, 210-520 mm.



REF : 101559

Rear protective cover to prevent climbing from the rear of the ladder.