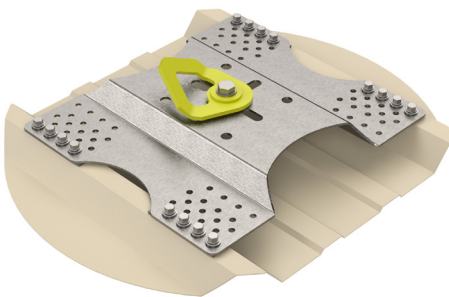
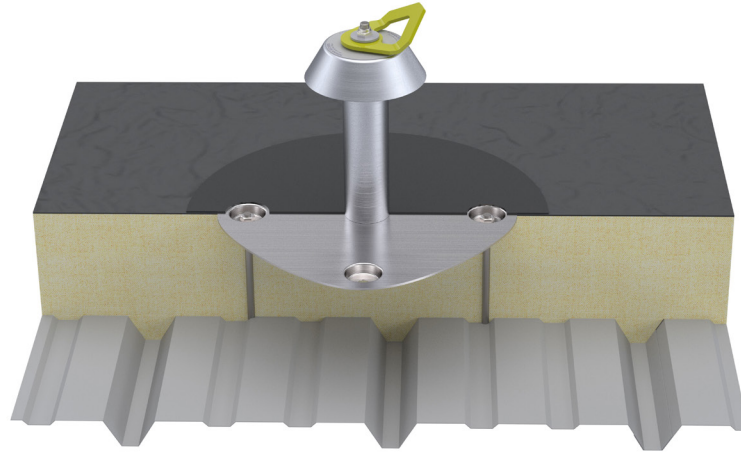


## Anchor point elements

### Special fasteners

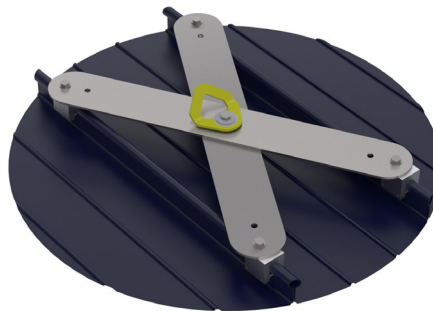
SOMAIN has developed and standardised specific interfaces for each type of roof.



**REF : 101761**

**PAY360 BA**

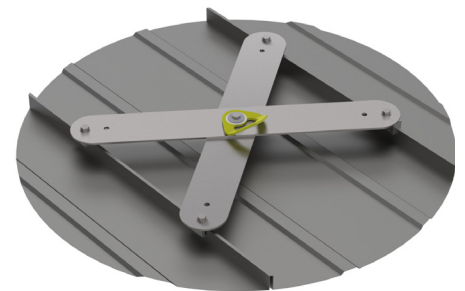
304L stainless steel yellow rotating anchor point with fixation for steel deck.  
210-250-275-300-330 mm corrugation centre to centre distances.



**REF : SPÉCIAL**

**PAY360 KL**

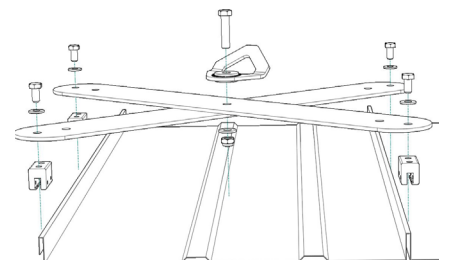
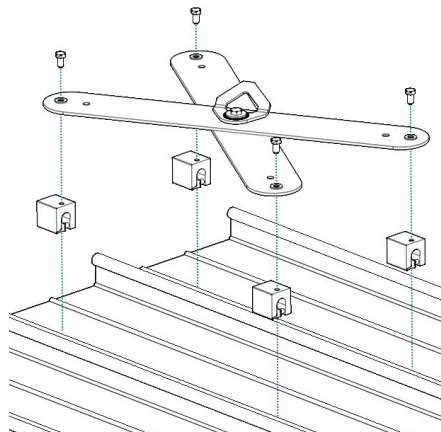
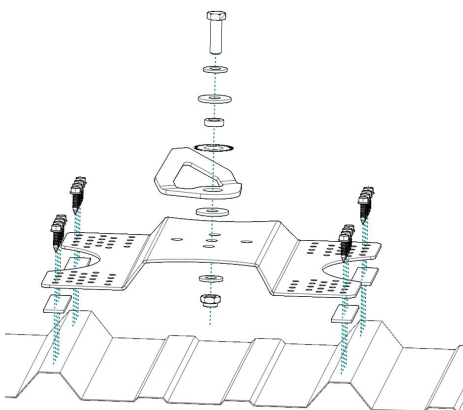
304L stainless steel yellow rotating anchor point with fixing for round standing seam roofs (S5-Z clamp).



**REF : SPÉCIAL**

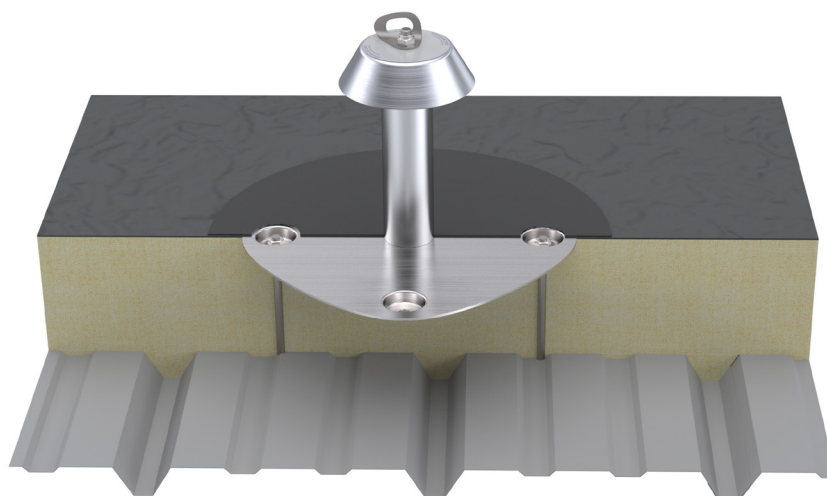
**PAY360 JD**

304L stainless steel yellow rotating anchor point with fixing for double-folded standing seam roofs (S5-E clamp).



## Fasteners

SOMAIN has developed and standardised specific interfaces for each type of roof.

**REF : 100751**

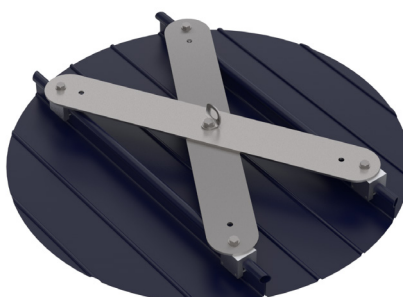
304L stainless steel anchoring plate with stainless steel support plate for steel deck. 210-250-275-300-330 mm corrugation centre to centre distances.

**Fixing:** 12 self-drilling screws provided.

**REF : 102281**

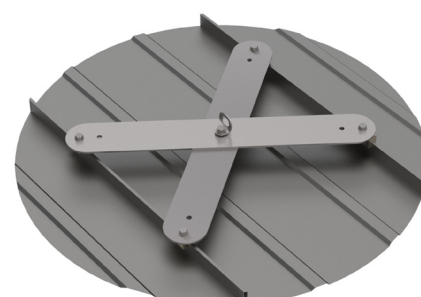
304L stainless steel anchoring plate with zinc-plated steel support plate for steel deck. 210-250-275-300-330 mm corrugation centre to centre distances..

**Fixing:** 12 self-drilling screws provided.

**REF : 100752**

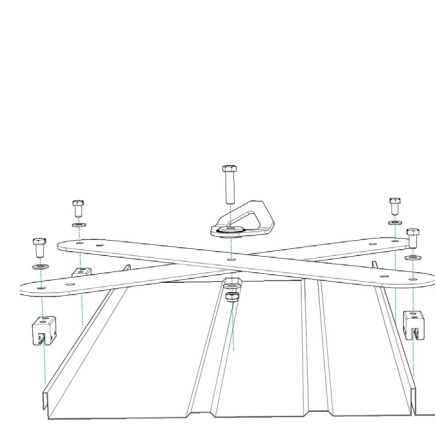
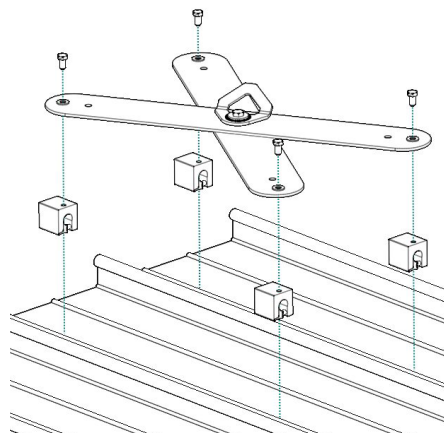
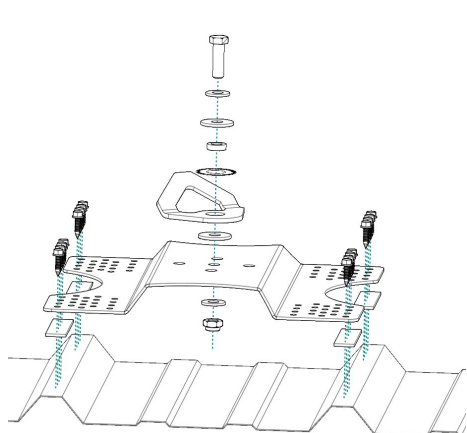
Stainless steel anchor point plate 304L with fixing for round standing seam roofs.

**Fixing:** 4 clamps S5-Z

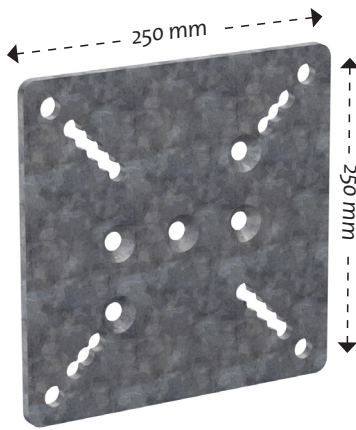
**REF : 100753**

Stainless steel anchor point plate 304L with fixing for double-folded standing seam roofs.

**Fixing:** 4 clamps S5-E.



Steel interfaces



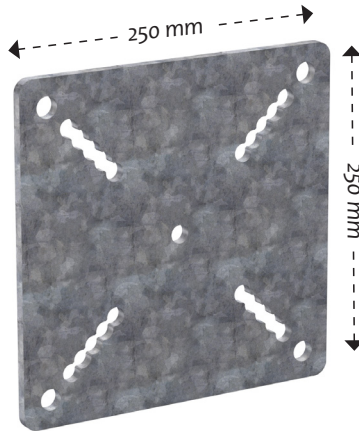
**REF : 101748**

Galvanised steel adjustment plate.

Fixing: 4M12

Centre-to-centre distance: 200 x 200 mm  
(fixing light : 100 mm - 200 mm)

Fastening: 185 mm (fixing light : 80 mm - 185 mm)



**REF : 101749**

Galvanised steel counter plate.

Fixing: 4M12

Centre-to-centre distance: 200 x 200 mm  
(fixing light : 100 mm - 200 mm)

Fastening: 185 mm (fixing light : 80 mm - 185 mm)



**REF : SPECIAL**

Made to measure.

Post face fixing, 100mm offset.  
Galvanised steel.

Fastening

On metal or wood beams.



The lengths and widths of the elements are sized to be suitable for the supports.

Clamping

On metal beams.



This involves pinching the flanges of the beam using 2 clamping plates.

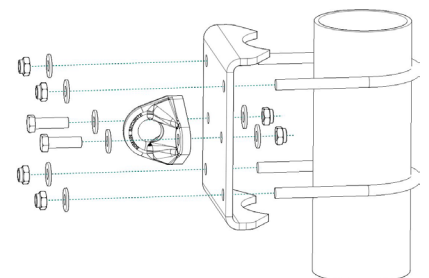
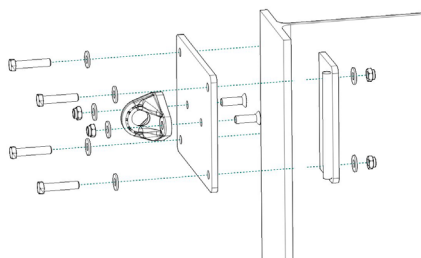
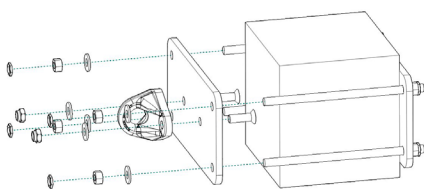
The lengths and widths of the elements are sized to be suitable for the supports.

On a tube

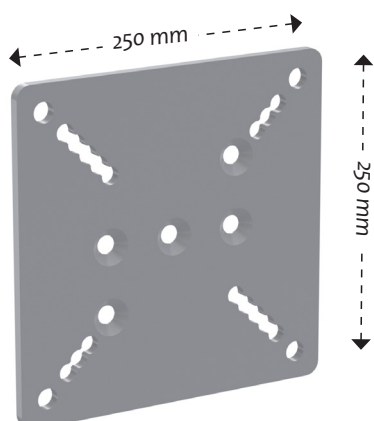
On metallic round tubes.



The lengths and widths of the elements are sized to be suitable for the supports.



Stainless steel interfaces



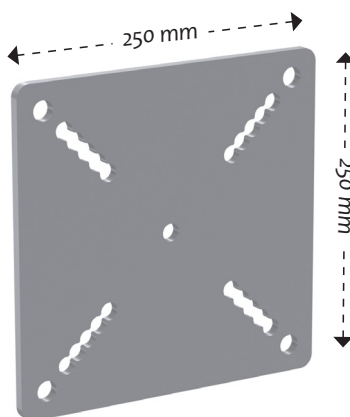
REF : 101748

Stainless steel adjustment plate.

Fixing: 4M12

Centre-to-centre distance: 200 x 200 mm  
(fixing light : 100 mm - 200 mm)

Fastening: 185 mm (fixing light : 80 mm - 185 mm)



REF : 101749

Stainless steel counter plate.

Fixing: 4M12

Centre-to-centre distance: 200 x 200 mm  
(fixing light : 100 mm - 200 mm)

Fastening: 185 mm (fixing light : 80 mm - 185 mm)



REF : SPECIAL

Made to measure.

Post face fixing, 100mm offset.  
Stainless steel.

Fastening

On metal or wood beams.



The lengths and widths of the elements are sized to be suitable for the supports.

Clamping

On metal beams.



This involves pinching the flanges of the beam using 2 clamping plates.

The lengths and widths of the elements are sized to be suitable for the supports.

On a tube

On metallic round tubes.



The lengths and widths of the elements are sized to be suitable for the supports.

